



# Improving Diagnostic Accuracy and Efficiency for Routine Chest X-rays at Semmelweis University

RAYSCAPE

IN PARTNERSHIP WITH SEMMELWEIS  
UNIVERSITY 1769



# RAYSCAPE

We augment radiologists analyzing X-rays and CTs by tapping into 200,000,000 medical images of experience.

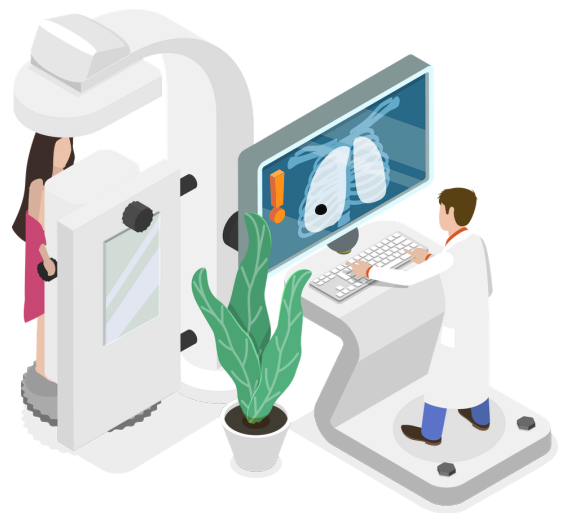
## About Semmelweis University

Semmelweis University is a premier, 250-year-old medical institution and healthcare provider from **Budapest, Hungary**, recognized as the country's leading medical and health sciences center. It operates as a comprehensive university hospital, treating **over 3.5 million patients annually** across specialized departments including internal medicine, surgery, and radiology.

Website: <https://semmelweis.hu/english/health-care/>

## The challenge

The high volume of chest X-ray examinations created a need for a solution that could support radiologists without slowing them down. The team wanted a tool that was intuitive, quick, and capable of complementing clinical judgment



Chest X-ray is still one of the most frequently requested exams



Difficulty finding an AI solution optimized for routine scans

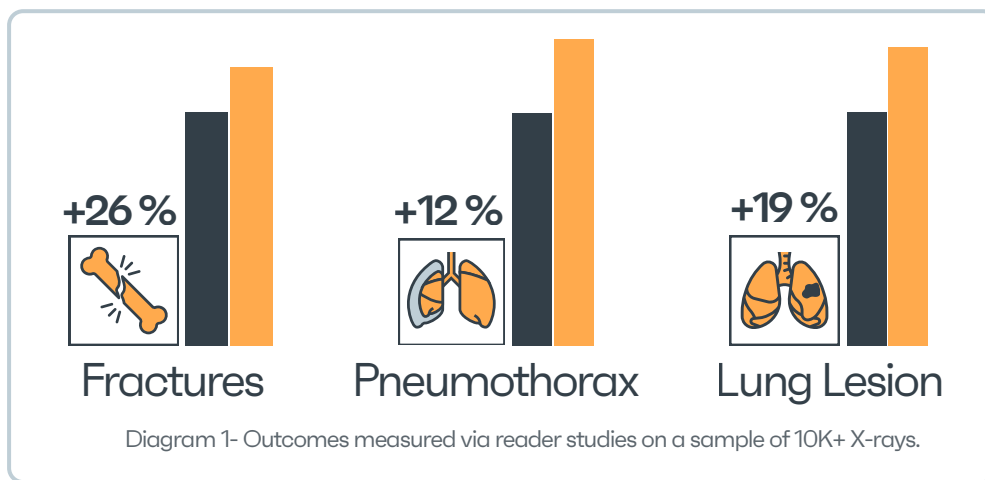


Need for seamless integration into the existing workflow

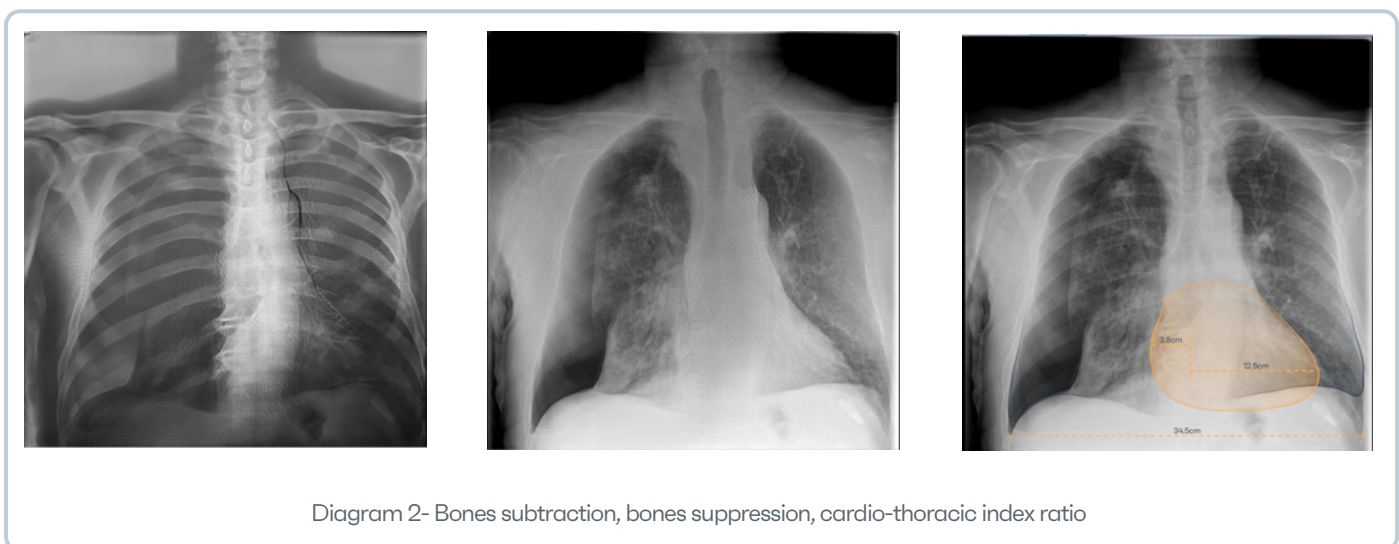
## About Rayscape CXR

Rayscape CXR is an AI-powered solution designed to support radiologists by drawing attention to findings that might otherwise be overlooked, offering a clear and intuitive layout that is easy to review in daily practice.

Test Rayscape CXR: <https://demo.rayscape.ai/home>



Features such as the bone suppression provide additional visual support, and are fast enough to fit seamlessly into busy clinical workflows. The results are delivered directly into the PACS system, helping radiologists be more efficient without sacrificing accuracy.



## Key benefits following the deployment

- ✔ Support in identifying subtle findings with higher accuracy
- ✔ Greater confidence as second reader & double-checking interpretations
- ✔ Useful additional visualization
- ✔ Integration into existing workflow
- ✔ Smooth implementation with strong vendor support

*“There was one instance where both radiologists missed a small pneumothorax, but the software drew attention to it, so we didn’t miss it. It was complementary to us. Deployment was fast, the on-premise server installation went smoothly, and support from the Rayscape team was very good throughout the process.”*



Dr. Tamás Munkácsi



SEMMELWEIS  
UNIVERSITY 1769



Dr. Szabó Ádám

## Facing similar challenges and aiming for the same results?

Get in touch to request your free trial of Rayscape CXR. Our team is ready to support you through deployment and integration, ensuring a smooth transition and helping you unlock the full benefits of AI in your workflow.

✉ [andreea.purcaru@rayscape.ai](mailto:andreea.purcaru@rayscape.ai)